

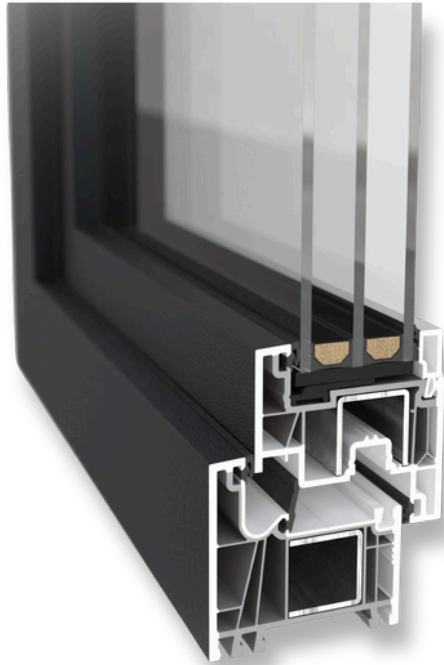
# PERFORMANCE IN PROFILE

Windows engineered for daylight, insulation, and operational reliability - designed for long-term use in contemporary building envelopes.

GEALAN-LINEAR® combines sharp, angular lines with a slim, aluminum-like look for modern architectural designs.

Integrated internal reinforcements provide the structural stability needed for large-format windows and wide openings, making it ideal for both luxury residential and storefront-style applications.





The multi-chamber core enhances security and sound insulation while delivering exceptional energy savings.

When paired with high-performance triple-glazing, the system reaches Passive House - level efficiency with U-factors as low as 0.15.

**NAFS / AAMA Testing (Intertek, Report S2321.01-109-44)**

<b>Class:</b>	<i>AW Performance Grade up to 70</i>
<b>Design Pressure:</b>	$\pm 2640 \text{ Pa}$ ( $\pm 55.14 \text{ psf}$ )
<b>Air Infiltration:</b>	$< 0.01 \text{ cfm/ft}^2$
<b>Air Exfiltration:</b>	$< 0.01 \text{ cfm/ft}^2$
<b>Water Penetration Resistance:</b>	720 Pa

<b>IGU Thickness:</b>	<i>From 0.8" to 2.0"</i>
<b>Max Height:</b>	<i>Up to 11' 6"</i>
<b>Max Width:</b>	<i>Up to 11' 6"</i>
<b>U-value (BTU/hr.ft<sup>2</sup>.°F)</b>	<i>From 0.15</i>
<b>SHGC (Solar Heat Gain Coefficient)</b>	<i>0.14 - 0.45</i>
<b>VT (Visual Transmittance)</b>	<i>0.35 - 0.55</i>